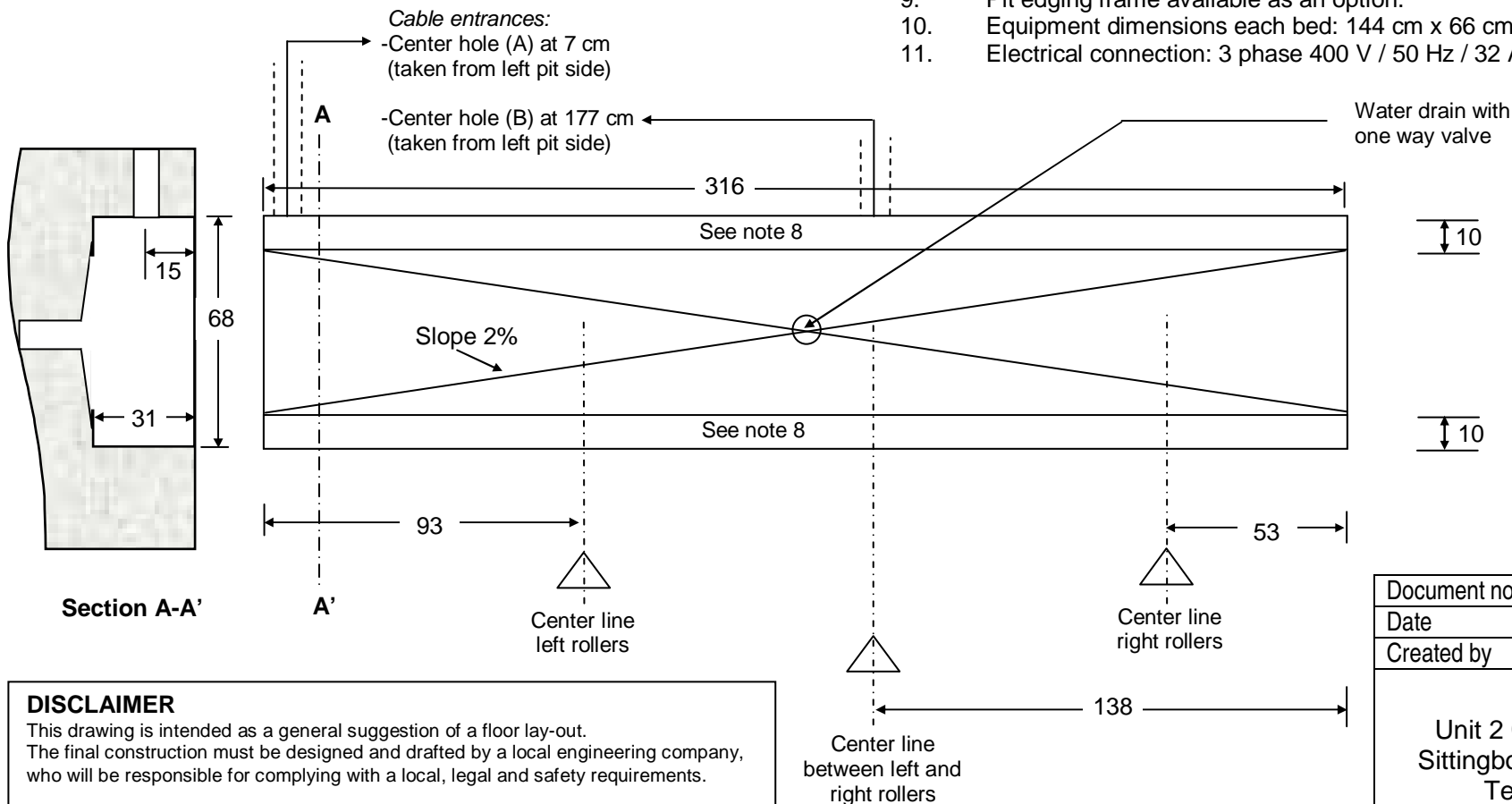


Document 62591: Single pit floor foundation plan MOT Class 7 roller brake tester-2090 (without floor frames)

Notes:

1. Dimensions in centimeters.
2. General tolerance of dimensions in the drawing – 0 + 1cm.
3. Admissible floor load >30 kN/m².
4. Recommended distance between RT and display: 2.5 – 5 meter.
5. Use PVC conduits of 80 mm diameter between pit and display.
6. Use cable entrances (A) and/or (B) for position of conduits. Single conduit for all cables at entrance (A) or (B) is possible.
7. The lower end of the left short side of each bed is open for 14 cm. Conduits can also be routed through this side.
8. Flat surface of 10 cm wide supports chassis.
9. Pit edging frame available as an option.
10. Equipment dimensions each bed: 144 cm x 66 cm x 30 cm (31 cm with bolts).
11. Electrical connection: 3 phase 400 V / 50 Hz / 32 A, motors 2 x 5.5 kW.



DISCLAIMER

This drawing is intended as a general suggestion of a floor lay-out. The final construction must be designed and drafted by a local engineering company, who will be responsible for complying with a local, legal and safety requirements.

Document no.	62591
Date	06.06.2002
Created by	RT

MOTKIT

Unit 2 Conyer Farm Estate,
 Sittingbourne, Kent, ME9 9HH
 Tel: 01795 522201